



# Victoria to Maui International Yacht Race

## **Bulletin 8 – SPECTATOR BOAT INFORMATION**

THE ROYAL VANCOUVER YACHT CLUB AND THE LAHAINA YACHT CLUB PRESENT AN

# *Ocean Racing Classic*

THE TWENTY FOURTH EDITION

START: VICTORIA, BRITISH COLUMBIA  
**JULY 3—7, 2014**  
FINISH: LAHAINA, MAUI  
**AWARDS BANQUET: JULY 26, 2014**  
DISTANCE: 2308 NAUTICAL MILES  
VICMAUI.ORG

# VIC·MAUI

— 2014 —

CHALLENGE · ADVENTURE · TEAMWORK

[www.vicmaui.org](http://www.vicmaui.org)



## Vic-Maui Acknowledges the Support of our Sponsors

### Co-hosts



### Gold Sponsors



### Silver Sponsors



### Supporters



Please see [www.vicmaui.org/sponsors](http://www.vicmaui.org/sponsors) for more information and links.



# VICTORIA TO MAUI INTERNATIONAL YACHT RACE

## Bulletin 8 – SPECTATOR BOAT INFORMATION

**Spectator Boat Coordinator:** Jon McLean, email [spectators@vicmaui.org](mailto:spectators@vicmaui.org), cell 604-551-6149.

**Moorage:** Official & Spectator Boats will be moored with the Vic-Maui fleet in Victoria's Inner Harbour at the Causeway Docks.

**First Start boats:**      **Social** – Tuesday July 1, 3:00-5:30 pm      **Start** - Thursday July 3, 10:00 am  
**Second Start boats:**      **Social** – Thursday July 3, 3:00-5:30 pm      **Start** - Saturday July 5, 10:00 am

**Suggested times for Spectator Boats:** have spectators arrive at the dock by 0830, board spectators by 0845, conduct a safety briefing, leave the dock by 0915, observe the start area from 0930 through 1030, return to the dock to drop off spectators around 1100. Unless staying and paying for additional nights of moorage, be away from the dock before noon.

### **Spectator Boat Responsibilities:**

- Register in advance by booking Vic-Maui moorage as a spectator boat at <http://www.vicmaui.org/victoria-moorage>.
- Hail "Vic-Maui Wharfinger" on VHF Ch. 66A when approaching the dock. Be aware that rafting may be required and that shorepower may be limited or unavailable.
- Coordinate directly with the competitor boat or spectators that you are teamed with. Let your spectators know what time you'd like them onboard and what they should bring. Consider asking someone to arrange for refreshments and snacks.
- Spectator boat skippers are responsible for the safety and comfort of their crew, spectators and boat, and must ensure that there is adequate safety equipment (especially PFD's) and capacity for the total number of people onboard.
- Pay close attention to the [Port of Victoria traffic scheme](#).
- Stay well clear of the competitor boats, and maneuver carefully among all other boats.

### **Start Area Instructions:**

Page 4 of this Bulletin is the Start Area Spectator Instructions sheet. Please take it to the Start Area and respect the instructions and spectator areas so that the competitors can have a fair and trouble-free start. Monitor VHF Ch. 72 when in the vicinity of the Start Area.



The Greater Victoria Harbour Authority welcomes the 2014 Vic-Maui fleet and invites competitors, family and friends to explore and enjoy Victoria's Harbour. GVHA website: <http://gvha.ca/>

Maps of [Victoria Harbour](#), [Causeway Docks](#) and [Port of Victoria Traffic Scheme](#)





# START AREA SPECTATOR INSTRUCTIONS

**VICTORIA-MAUI INTERNATIONAL YACHT RACE**

**START AREA SPECTATOR INSTRUCTIONS**

Ogden Breakwater

Spectator Area

Brotchie Ledge

Competitors Only Please

Race Passage & Lahaina

Race Committee

Spectator Area

The start line is between Brotchie Ledge and the Race Committee Boat

Starting Signals (PDT)

Warning	1000	Numeral Pennant 1 Raised
Preparatory	1001	Signal flag "P" Raised
	1004	Signal flag "P" Lowered
Start	1005	Numeral Pennant 1 Lowered

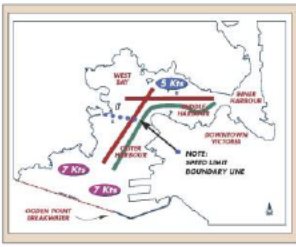
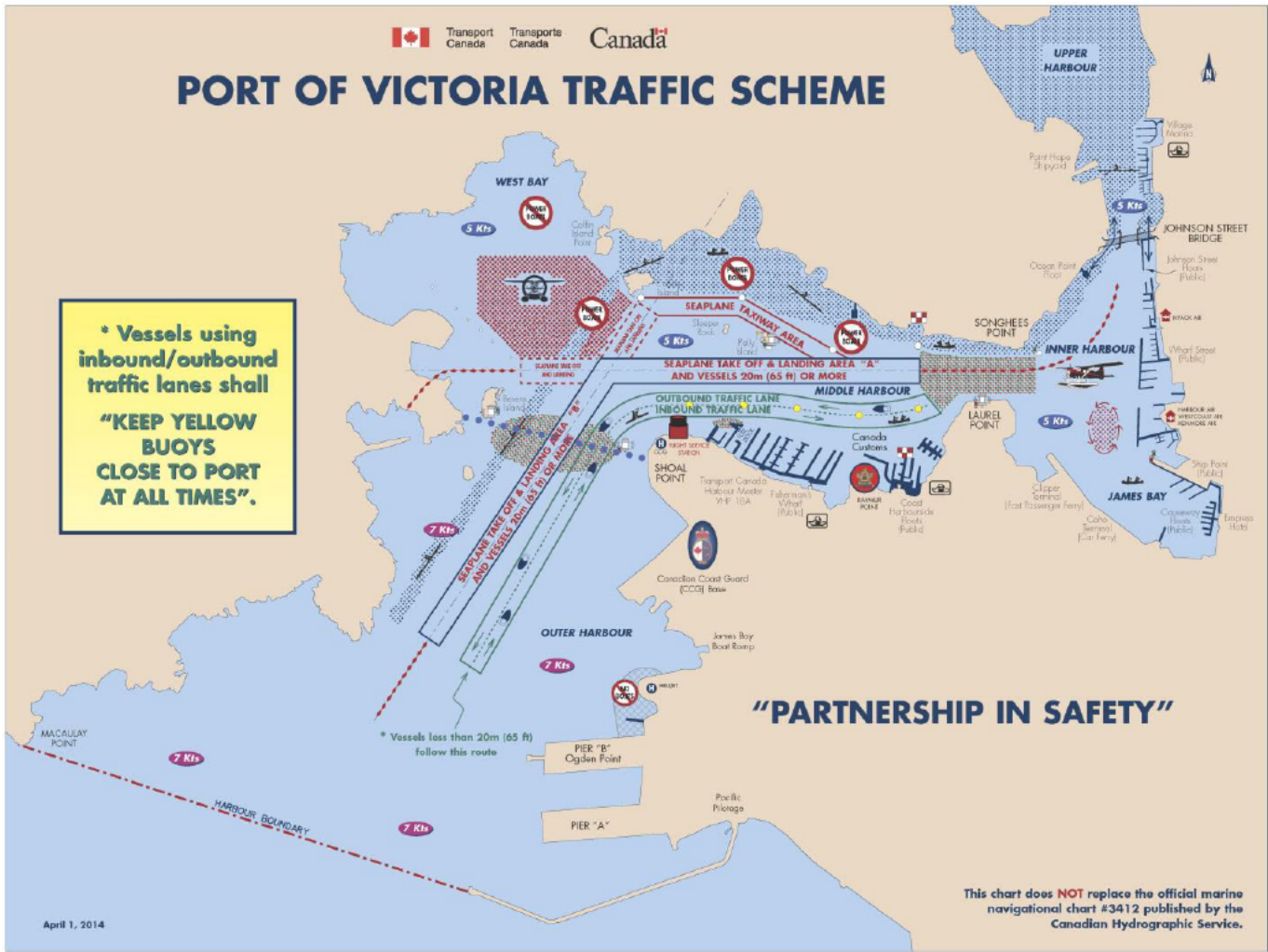
Courtesy to Competitors

- Pre-start, spectator boats should remain in the designated Spectator Areas to allow the competitors a free and fair start.
- After the start, spectator boats may follow the competitors towards Race Passage, making a minimum wake.

**Monitor VHF Channel 72 for race committee communications**

Numeral pennant 1

Signal flag "P"



**LEGEND**


NOT TO SCALE

© Printed in Canada on Recycled Paper. Published by Transport Canada - Créé par D.S. Kilar - Graphic Design by Anshaya Parikh.